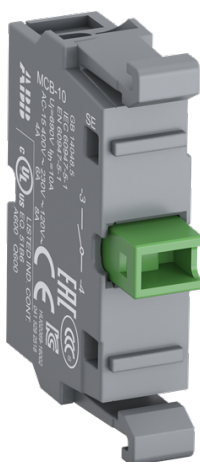


PRODUCT-DETAILS

MCB-10

MCB-10 Contact Block



General Information

Extended Product Type	MCB-10
Product ID	1SFA611610H1001
EAN	7320500544327
Catalog Description	MCB-10 Contact Block

Long Description

The MCB-10 Contact Block is: - Non-illuminated - Single contact block - Front mounting - silver (Ag) - 1 NO - 0NC - 690 V

This Contact Block is part of ABB's modular plastic range, the most versatile range with a high level of flexibility and market-leading electrical ratings. Engineered for total reliability, longer lifetime, and highest mechanical durability. Self-cleaning contacts ensure reliable operation without the need for maintenance, increasing uptime. A high degree of protection guarantees reliability in extreme environments. The innovative design simplifies the entire process, from selection to easy and quick, tool-free installation. The perfect solution for every application.

Ordering

Minimum Order Quantity	100 piece
Customs Tariff Number	8536901000

Popular Downloads

Data Sheet, Technical Information	1SFC151007C02__
Instructions and Manuals	1SFC151011M0201

Dimensions

Product Net Width	0.01 m
Product Net Height	0.044 m
Product Net Depth / Length	0.028 m
Product Net Weight	0.013 kg

Technical

Ambient Air Temperature	Operation -25 ... +70 °C Storage -40 ... +85 °C
Illumination	Non-illuminated
Function	Without holder
Mounting Type	Front mounting
Number of Auxiliary Contacts NC	0
Number of Auxiliary Contacts NO	1
Pollution Degree	3
Rated Insulation Voltage (U _i)	690 V
Rated Impulse Withstand Voltage (U _{imp})	6 kV
Rated Frequency (f)	50 / 60 Hz
Rated Operational Voltage	Maximum 690 V
Rated Operational Current DC-13 (I _θ)	(24 V) 5 A (125 V) 0.55 A
Rated Operational Current AC-15 (I _θ)	(230 V AC) 6 A
Power Loss	Maximum 2.5 W
Connecting Capacity	Flexible with Ferrule 1 x 0.75...2.5 mm ² Flexible with Ferrule 2 x 0.75...2.5 mm ² Flexible with Insulated Ferrule 1 x 0.75...2.5 mm ² Flexible with Insulated Ferrule 2 x 0.75...2.5 mm ² Flexible 1 x 0.75 ... 2.5 mm ² Flexible 2 x 0.75 ... 2.5 mm ² Solid 1 x 0.75...2.5 mm ² Solid 2 x 0.75...2.5 mm ²
Connection Type	Screw Clamp
Terminal Type	Screw Terminals
Tightening Torque	0.9 N·m
Wire Stripping Length	8 mm
Suitable For	MP1 MP2 MP3 MP4 MPD1 MPD2 MPD3 MPD4 MPD5 MPD11 MPD12 MPD13 MPD14 MPD15 MPD16 MPM1 MPM2 KP6 MPET3 MPEP3 MPEK3 MPET4 MPEP4

- MPEK4
- MPMT3
- MPMT4
- MPMP3
- MPMP4
- M2SS1
- M2SS2
- M2SS3
- M2SS4
- M2SS5
- M2SS6
- M3SS1
- M3SS2
- M3SS3
- M3SS4
- M3SS5
- M3SS6
- M3SS7
- M3SS8
- M3SSC1
- M3SSC2
- M3SSC3
- M3SSC4
- M3SSC5
- M3SSC6
- M3SSC7
- M3SSC8
- M2SSK1
- M2SSK2
- M2SSK3
- M3SSK1
- M3SSK2
- M3SSK3
- MTS1
- MTS2
- MTS3
- MJS1
- MJS2
- MJS5
- MJS6
- MJS7
- MJS8
- MJS11
- MJS12

Suitable for Product Class Pilot Devices

Technical UL/CSA

Connecting Capacity 1x 18...14 AWG
 UL/CSA 2x 18...14 AWG

Environmental

Degree of Protection Terminals IP20

Material Compliance

Conflict Minerals Reporting Template (CMRT) 9AKK108467A5658
 REACH Declaration 2CMT2022-006479
 RoHS Information 2CMT2022-006498
 RoHS Status Following EU Directive 2011/65/EU and Amendment 2015/863 July 22, 2019
 Toxic Substances Control Act - TSCA 2CMT2023-006523
 WEEE B2C / B2B Business To Business
 WEEE Category 5. Small Equipment (No External Dimension More Than 50 cm)

Certificates and Declarations

CB Certificate	SEMKO_SE30016M2
CQC Certificate	CQC2005010304154103
cULus Certificate	UL-E76003-20140513
Declaration of Conformity - CCC	2020980305001528
Declaration of Conformity - CE	2CMT2015-005452
Declaration of Conformity - UKCA	2CMT2020-006121
DNV GL Certificate	E-14107

Container Information

Package Level 1 Units	bag 100 piece
Package Level 1 Width	0.4 m
Package Level 1 Depth / Length	0.35 m
Package Level 1 Height	0.225 m
Package Level 1 Gross Weight	1.8 kg
Package Level 1 EAN	7320500356814

Classifications

Object Classification Code	S
ETIM 6	EC000041 - Auxiliary contact block
ETIM 7	EC000041 - Auxiliary contact block
ETIM 8	EC000041 - Auxiliary contact block
eClass	V11.0 : 27371302
UNSPSC	39121500

Categories

Low Voltage Products and Systems → Control Products → Pilot Devices → Modular Plastic Range

